

Ear Impression Requierements Recommandations for our Audiologist Partners

DISCLAIMER:

We reserve the right to refuse any ear impression that doesn't meet our standard of quality. The Direct 3D in-ear scanning (scan file comes from a direct 3D scanning in the ear) are refused due the poor accuracy of the output files.

A perfect ear impression is essential to get the best final product.

1. Full ear impressions (the full helix, crus of the helix, tragus and antitragus must complete with no missing parts till the 2nd bend)
2. The impressions must be preferably made of high viscosity silicone impression material.
3. To get the best performances, the impression must be taken with the customer's mouth in real use situation aperture:

OPEN

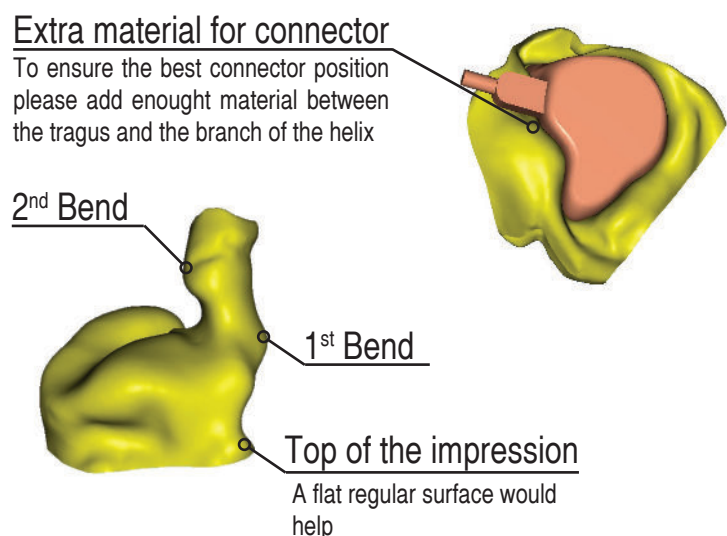
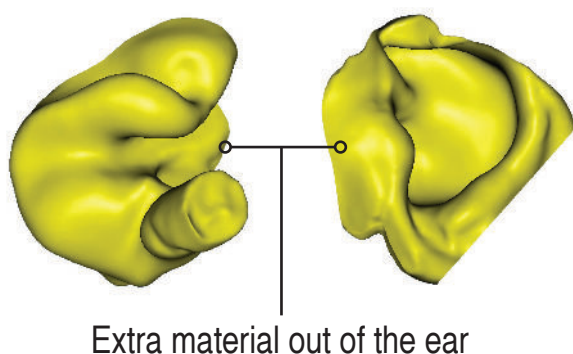
For singers or wind instruments, we suggest to use a 1 inch bite block during the impression process this more comfortable for the customer.

CLOSE

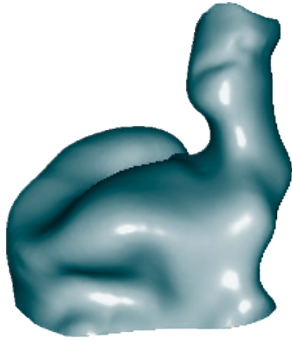
For other no singer musicians or/and HiFi application

Ensures that there is no jaw movement while the material is curing.

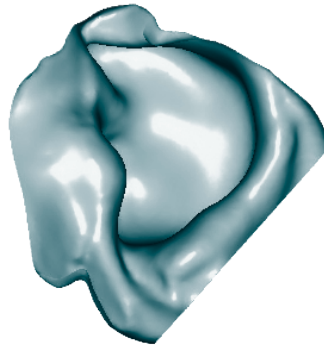
What are the most critical points?



Good IEM's ear impressions



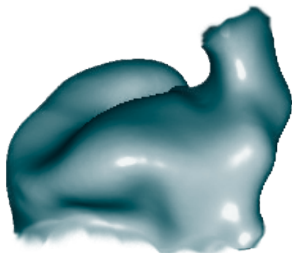
Beginning of the 2nd Bend visible



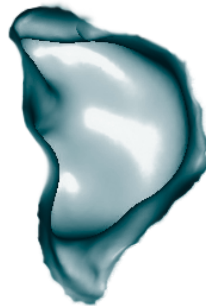
Extra material outside to cover and mold the tragus and the rise of the Anti-Helix



Rejected IEM's ear impressions



1st Bend only (canal to short)



Poor outside molding material, the essential points are not covered



My appointment with the audiologist

Since hearing rejections can be frustrating, we recommend that you proceed as follows:

1. Book an appointment with an audiologist for an ear impression
2. Send us your appointment with time to the following address: support@p-ear-s.ch
3. Add our contact



4. On site, on the day of the appointment, once your fingerprints have been realized and demolded, scan the following QR code to display the views to be photographed and submit via WhatsApp:



5. After we receive the photos, we can confirm that they are aligned with the expected quality specifications.
IMPORTANT: Please wait for the confirmation before you leave the store.
6. You have received our confirmation, perfect. Send your ear impressions in a box so that they are not crushed during transport.